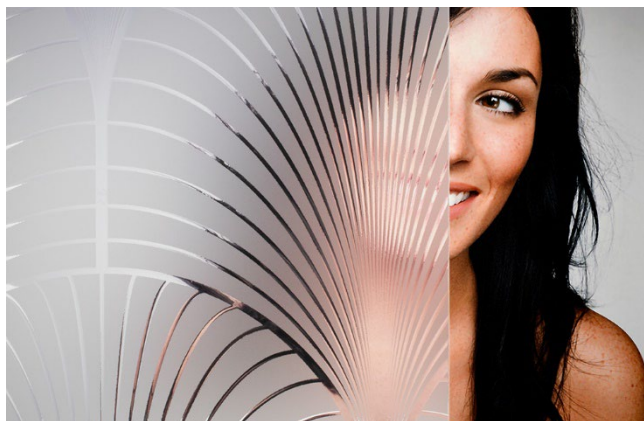


SOLYX® Glass Finishes

SX-1760-UG Frosted Turrets



Product Description

SOLYX® SX-1760-UG Frosted Turrets is a polyester film with a classic art deco pattern on a background which obscures visibility yet lets the light through.

Specifications

Product Code	SX-1760-UG
Product Family	Geometric
Film Type	Polyester
Adhesive Type	Pressure-Sensitive
Usage	Interior
Available Width(s)	58"
Full Roll Length	90 linear feet
Thickness	2 mil
Visible Light Transmission	70%
UV Rejection	99%
Infrared Transmission	85%

Product Construction

Face Film

Polyester

Adhesive

Clear, Pressure-Sensitive

Release Liner

Transparent, Synthetic, Plottable

Product Details

SOLYX® SX-1760-UG Frosted Turrets is an adhesive film with an etched-look finish and a timeless art deco pattern. It is made from durable, easy to work with polyester, and is recommended for application to interior glass. This film is perfect for privacy, decorative, or architectural applications.

Flammability Rating

This product meets ASTM E84 and is classified as Class A as defined in NFPA 101, Life Safety Code®.

LEED Credit EQ 4.1 Low Emitting Materials, Adhesives & Sealants

This product has zero VOC content according to 40 CFR 59, Subpart D (EPA method 24).

Installation and Warranty

Installation

Installation should be in accordance with the manufacturer's installation instructions. This film is applied using the same tools and techniques used for installing window tinting films.

Warranty

This SOLYX® product will be free from defects in material and manufacture for a period of five (5) years from the date of installation. See warranty information for specific details.

Product Distribution and Contact Information

Distribution

SOLYX® Decorative Films are available through authorized Installing Dealers, Distributors, or directly from Decorative Films, LLC.

Samples submitted upon request.

Contact Information

Decorative Films, LLC

1-888-657-5224

www.decorativefilm.com